

Junior Field Naturalists SA

Newsletter - March 2022

Hi Junior Field Naturalists,

After foregoing our usual February meeting due to uncertainties with restrictions on gatherings, we are delighted that our club is now starting back with our monthly meetings and other field trips and activities. *So come along and join us for our upcoming meeting.*

March Meeting

When: Tuesday 29 March, 7.00pm, in the Gym of the Bellevue Heights Primary School

Topic: KOALAS

Overview: Learn about koala features and facts, and what to do if you find a koala in need of help. There are many threats facing these adorable animals, such as loss of habitat, climate change and disease. Find out what *you* can do to help protect koalas.



Speaker: Our speaker is **Merridy Montarello** from **Koala Rescue**.

Koala Rescue is a volunteer-run, not-for-profit charity providing a free service 24/7. Their accredited koala carers provide care and treatment for sick and injured koalas until they can be released back into their original territory whenever possible.



Program of Talks and Activities

Below is our current schedule of dates for 2022. We will be including more activities as the year progresses, so this list will be updated as we lock in additional dates and programs.

Have a particular topic or field trip you would like us to include? Let us know and we'll see what we can do to make it happen.

29 March - Merridy Montarello (Koala Rescue): **KOALAS**

3 May - tba

Saturday 7 May: 2.30pm - Talk & walk in Belair National Park, led by James Smith from Faunature, in conjunction with Belair Bush Buddies

31 May - tba

Sunday 26 June: FUNGI FORAY FIELD TRIP (Belair National Park)

28 June - tba

26 July - tba

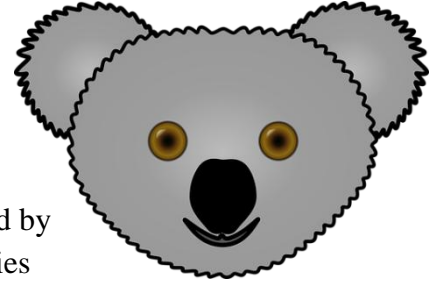
30 August - tba

27 September - tba

25 October - tba

29 November - **DAVID CHRISTOPHEL MEMORIAL QUIZ NIGHT**

Parents attend meetings and field trips with their children and are responsible for their supervision.



Joining the Club

To hasten enrolments at our meetings, new and returning members can download an application form from our web site at: <http://jfnsa.com.au/downloads/>

Fill it in and bring it along on the night. We accept cash or cheque payments, or you can do a direct bank deposit - details are on the form.

Promoting our Club

Help us to spread the word about Junior Field Naturalists SA:

Facebook: Check out our club's **Facebook** page and "Like" us.



Brochures: We will have a supply of our brochures available at each meeting. You are welcome to take some to spread around at your local library, school, community centre and so forth.



2022

Mary Anning ART PRIZE



The aim of the Mary Anning Art Prize is to have young South Australian artists create an original piece of artwork that tells us something about the prehistoric life of South Australia. It is essential, to be eligible, that the artwork explores an element of South Australia's rich and remarkable prehistoric past, and that the artist lives in South Australia. To explore and illustrate our own past is to better know who we are as South Australians, and to better understand our unique place in the history of life.

OPENING AND CLOSING DATES

Submissions open -
14th March 2022

Submissions close -
17th June 2022

ENTRY CATEGORIES

Reception to Year 2

Year 3 to Year 5

Year 6 to Year 8

PRIZES

1st, 2nd and 3rd prizes
will be awarded in each
year group category

SPONSORS



Last year our Club member **Ophelia Harding** won the 8-12 year old category in the *Dinosaur University Mary Anning Art Prize* for her impressive model of one of the world's earliest ediacara arborea.

Club members might be interested in creating an artwork to enter into this year's Mary Anning Art Prize. For further details, check out:

https://www.sasta.asn.au/student_activities/mary-anning-art-prize

Children's University

Children's University Adelaide offers educational experiences for children aged 5 to 14. Their achievements are then recognised through the award of formal certificates and graduations. Our Club is one of the **Learning Destinations** and participants' *Passports to Learning* can be stamped at our meetings and field trips.



A couple on upcoming public events that might be of interest to club members:

Tonsley Science Fair



Tonsley Science Fair
Presented by The Science Collective

See some inspiring science shows from
Nitro Nat, Professor Flint, Animals
Anonymous, The Wipe Out Waste Wizard,
and more.

Sunday March 20, 2022
Tonsley Innovation District

Explore exhibits from Questacon, Switched on Kids, Marine Discovery Centre, Bugs n Slugs, Techspace Learning, Hackerspace Adelaide, Ignite VR, Micro-X, Animals Anonymous, the Academy of Interactive Entertainment, Roboroos, Flinders University and KESAB

Tickets for AM and PM sessions must be purchased from www.thesciencecollective.com

The poster features a purple background with a large yellow starburst graphic. On the right, a pair of hands holds a purple, textured object. On the left, a green beetle is shown above a globe held by multiple hands. On the bottom right, a lightbulb contains a small green plant.



Marine Discovery Centre Open Day

Join the team at the **Marine Discovery Centre** for a morning of fun, marine-based learning. During the session, you will have access to a variety of discovery stations, including Kaurna learning, sea aquariums, interactive models, virtual reality headsets, hands-on games and recycled craft activities. **Bookings at Eventbrite.**



The poster features a central circular graphic with the text 'MARINE DISCOVERY CENTRE OPEN DAY SATURDAY 26 MARCH 10AM - 12PM'. Above the circle are two yellow and blue striped fish. The Marine Discovery Centre logo is in the top right. Below the circle are three small images: a man looking at a tank, people using VR, and a woman holding a large fish. A list of activities and ticket information is provided in two columns. At the bottom, it says 'Seeded by GREEN ANELAIDE' with a purple pufferfish icon, and provides the website 'marinediscoverycentre.com.au' and phone number 't 8115 7402'. The address 'Corner Marlborough St & Seaview Rd, Henley Beach' is at the very bottom.

MARINE DISCOVERY CENTRE
OPEN DAY
SATURDAY 26 MARCH
10AM - 12PM

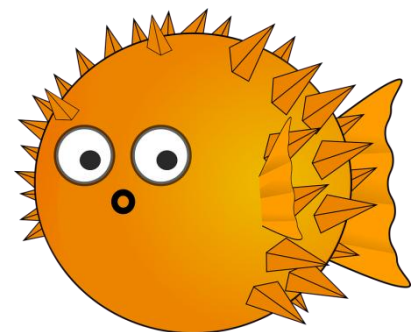
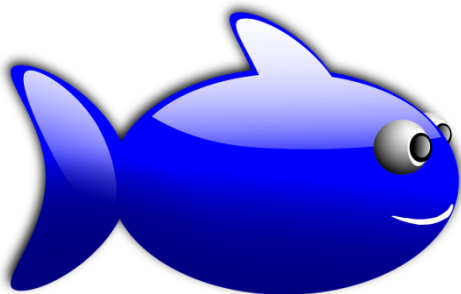
Marine Discovery Centre

✓ \$10 per person (Children 3 and under free of charge)
✓ Tickets available from Eventbrite or Facebook

✓ South Australian marine life
✓ Virtual Reality experiences
✓ Beach Marine Trail
✓ NEW interactive games
✓ Kaurna Cultural Tools

Seeded by **GREEN ANELAIDE**

marinediscoverycentre.com.au t 8115 7402
Corner Marlborough St & Seaview Rd, Henley Beach



PLANTS AND WATER

How do plants get water to their leaves?



Plants need light, air, water, space and nutrients from the soil to grow.



You'll need

Celery
Water
Food colouring
Glass or jar

Instructions

Fill the jar about half full with water and add a few drops of food colouring.

Place a stick of celery in the jar and leave for a few hours.

You should find that the water and food colouring have travelled up the celery.

This demonstrates how plants transport water from the soil up to their leaves. The process is called **TRANSPIRATION**



Just for Fun

What is a room with no walls?

A mushroom

What is a cat's favourite dessert?

Mice-cream

Why don't you ever see giraffes in primary school?

Because they're all in high school

What do you call an old snowman?

Water!

Where would you find an elephant?

The same place you lost him

from kidsit.com



Random Animal Facts

- A **chameleon's tongue** is at least as long as its body.
- **Caterpillars** have 12 EYES!
- It's physically impossible for **pigs** to look up into the sky...weird but true!
- **Owls** can't move their eyeballs!
- **Anteaters** have no teeth.
- New Zealand has more **sheep** than people.
- Australia is home to 11 per cent of the world's 6,300 **reptile species**, making it the continent with the most number of reptiles.
- **Ants** don't have ears. They hear by feeling vibrations in the ground.
- **Emus** can only walk forward and not backward.

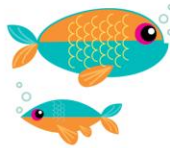


OPTICAL ILLUSION



You'll need

White cardboard
Pencils or colouring pens
Straw or pencil
Scissors
Glue/tape



Instructions

Cut out two squares from a sheet of white cardboard.

Draw a fish tank on one piece of card and a fish for the tank on the second piece.

Glue or sellotape a pencil or straw in between the two pictures.

Hold the pencil between your palms and rub your hands to make the picture spin around.

Why does it work?

This clever optical illusion lets you turn two pictures into one! Did you know your brain uses short cuts in order to process all the millions of things you see at any one time. An optical illusion “tricks” your eyes and brain.

When you spin the pencil your brain sees one image first and then the second image before it finishes processing the first, so you see two images at the same time.

Science Sparks™
Adult supervision required. You are responsible for your own safety.
www.sciencesparks.com



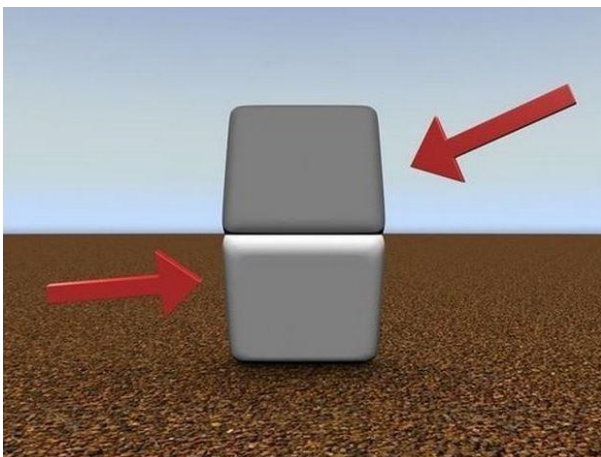
Facts About LIONS

- A **male lion** weighs around 180 kilograms, while an average female lion can weigh up to 130 kilograms.
- A **lion's roar** is so powerful that it can be heard from eight kilometres away.
- The **heaviest lion** ever weighed was at a mind-boggling 375 kilograms.
- The **responsibility of hunting** mostly lies with female lions, as they are better hunters than males.
- Lions are known to **rest** for around 20 hours a day.
- Males who possess **darker manes** are more likely to attract lionesses (female lions) for mating.
- Lions do not possess a lot of **stamina**, due to which they can run only in short bursts.
- Countries like Singapore, Ethiopia, England, Bulgaria, the Netherlands, and Albania have named the lion as their **national animal**.
- Lions have a **lifespan** of about 12 years.
- The **breeding** of lion and tigers gives birth to off-spring known as ligers and tigons.
- Lions are the most **sociable animals** in the cat family and live in prides of up to 25 individuals.



From parenting.firstcry.com

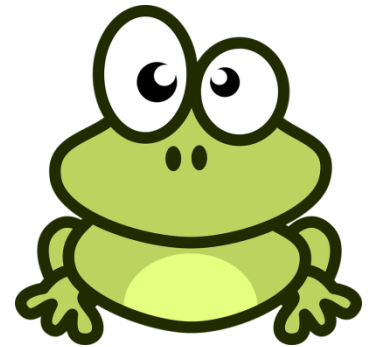
These 2 blocks are the same colour



Put your finger over the line where the boxes meet.

Did you know ...?

- * It's possible for **hot water** to freeze more quickly than **cold water**.
- * The chemical name for water is **dihydrogen monoxide**.
- * **Frogs** don't need to drink water since they can absorb it through their skin. Humans, on the other hand, have waterproofing proteins in their skin to help prevent water loss.
- * **Fire** typically spreads uphill more quickly than downhill. This is because temperature affects the rate of combustion. The region above a fire tends to be much hotter than the area below it, plus it may have a better supply of fresh air.
- * **Water** expands about 9% when it freezes into ice.



From ThoughtCo

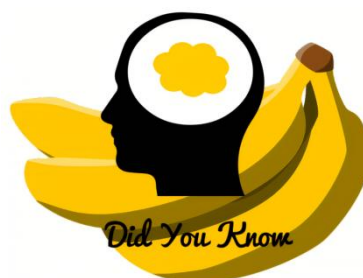


a grasshopper just after shedding its exoskeleton.

Image from thumbpress.com



Image from melloo.co.uk



Bananas contain so much potassium they are slightly radioactive.

Image from sciencenotes.org

Rona Sakko, President - Junior Field Naturalists SA

0419 827 723 jfnsa.com.au

rona.sakko@gmail.com

Patron: Prof Chris Daniels